

D8

DOZER



Engine Model
Power - Net
Operating Weight

Cat® C15
271 kW (363 HP)
39 500 kg (87,083 lb)

CAT®

D8

DOZER

The Cat® Next Generation D8 Dozer delivers renowned performance you expect, with the added benefit of next generation technology. A fully automatic, 4-speed transmission makes efficient operation easy, without having to manage gear shifts. The broadest range of technology features in the industry works together seamlessly to help you make the most of your equipment investment. Common interface and controls from the D5 through D8 make it easy to operate different machine sizes.



MORE WORK. LESS EFFORT.

Common cab, controls, and interface with the D5-D8 dozers and standard ease-of-use aids create an efficient operating environment.

PRODUCTIVITY WITH CAT TECHNOLOGY

Assist features reduce operator inputs, while options from the factory such as Cat Grade with 3D hardware or Cat Command with remote control ready make implementing technologies easier.

ENHANCED SAFETY AND SERVICE

Keep your site safe with a variety of camera options for your machine and reduce downtime with 30-minute cab removal and Read/Write Remote Troubleshoot.

NEXT GENERATION PERFORMANCE

- Fully automatic 4-speed powershift transmission continuously adjusts for maximum efficiency and power to the ground without added operator input.
- Next generation cab for the D8 means common controls and interface for all D5-D8 machines, making operators more efficient across multiple dozers.
- Blades are right sized to the machine to help you get jobs done in fewer passes.
- Elevated sprocket gives you better ride and balance, plus more penetration force.
- Long undercarriage is standard, with more track at the rear of the machine for superior dozing performance.
- Outfit your dozer from the factory to take on the challenges of slot dozing, ripping, fine grading, and more.



OPERATOR HELPERS



Assist features help make work easier, especially for less experienced operators. Some blade and steering functions are automated so newer operators can work at productivity levels closer to their veteran counterparts. Seasoned operators can enjoy reduced effort and fatigue, along with faster, more accurate results.

- Standard Assist features can reduce operator inputs up to 45%*. Cat Assist with Attachment Ready Option (ARO) features include:
 - Stable Blade works seamlessly with operator inputs to help produce a smoother surface when operating manually.
 - Traction Control automatically reduces track slip to save you time, fuel and track wear.**
 - AutoCarry™ automates blade lift to help you maintain consistent blade load and reduce track slip.**
 - Blade Load Monitor gives you real-time feedback on current load versus the optimal blade load based on your ground conditions. Actively monitors machine load and track slip to help you reach optimal pushing capacity.**
 - Cat Grade with Slope Assist™ automatically maintains pre-established blade position without a GNSS/GPS signal—no additional hardware or software needed. For machines with 3D, operators can easily switch back and forth from full 3D automatics to Slope Assist.
 - Steer Assist automates track and blade tilt steering. Helps reduce operator fatigue by automatically maintaining straight travel with light loads or heavy loads on flat ground and side slopes. Helps reduce steering inputs up to 75%. No GNSS/GPS required.
- Slope Indicate is included in the main machine display and shows side slope and uphill/downhill grades to help operators with slope work.
- Attachment Ready Option (ARO) provides wiring and mounting provisions for dealer installation of Grade with 3D, Accugrade, UTS, or other grade control systems.
- AutoRip automates ripper raise/lower and shank in/out to maximize ripping productivity.
- Application Profile lets you save machine settings based on application or operator preference. Utilize any of the default profiles defined by our expert operators or customize profiles for various jobs or multiple operators.
- Operator ID allows you to save custom touchscreen setup, machine settings, and to track individual operator productivity, safety and training opportunities via Product Link™.
- Machine security – passcode helps prevent theft and unauthorized operation by requiring an operator to enter an ID to start the machine.

* Input reduction based on product testing of a D5 (17B) Next Generation Dozer with and without the use of Slope Assist in a side slope application. Inputs measured as number of times operator adjusts controls, collected and verified by electronic control module (ECM). Test conducted by Caterpillar at Washington, IL, in July 2022.

** Feature not operational indoors or in areas where a GNSS/GPS signal is not available.

UPTIME COUNTS

- Cab can be removed in about 30 minutes.
- Easy access without tools under the cab floor if needed.
- Option to install Cat Grade with 3D hardware from the factory eliminates shop time later.
- Reduce downtime with Read/Write Remote Troubleshoot, allowing dealer technicians to diagnose more issues remotely, saving time on service calls.
- Keep safety at the forefront with additional camera options for enhanced visibility around the machine.
- Platform with guard rail makes refueling and diesel exhaust fluid (DEF) fill safe and convenient.
- Elevated sprocket makes cleanout easier and provides convenient, modular service.
- Reversing hydraulic demand fan helps remove debris while you work, saving cleanout and maintenance time.
- Longer life LED lights help save you time and money.



COMFORT AND VISIBILITY

- Common cab, interface, and controls with D5 through D8, raising the bar for comfort, productivity, and straightforward operation across dozer models.
- Integrated rollover protective structure (ROPS) and next generation cab design provides 17% improved visibility.*
- Easy-to-use 254 mm (10 in.) touchscreen main display.
- Standard, high-definition rearview camera shows prominently in the main display when in reverse.
- Key Features Help, built into the display, gives you an overview of machine and technology features and helpful operating tips.
- Wide air suspension seat has multiple adjustments for personalized comfort. Armrest adjusts independent of the seat.
- Distributed cab heating/cooling circulates air effectively around the operator and helps reduce window fogging/frosting.
- Ample storage spaces throughout the cab.
- Convenient USB and auxiliary power ports in cab.

**Visibility improvements based on virtual visibility analysis. Comparisons made from a D8 (21B) model to the Next Generation D8 (22A) model.*



BUILT-IN DURABILITY



- Elevated sprocket protects major components from shock loads.
- Heavier frame and structures for added durability.
- Cat C15 engine eliminates exhaust gas recirculation (EGR) system for greater reliability; simplified with a single engine electronic control module (ECM).
- Redesigned fuel system provides greater reliability and more accurate fuel delivery.
- New Heavy Duty Extended Life undercarriage— HDXL with DuraLink™ — provides more seal life in high impact conditions.
- Heavy-duty batteries for more cold-cranking power.

WASTE HANDLING PERFORMANCE

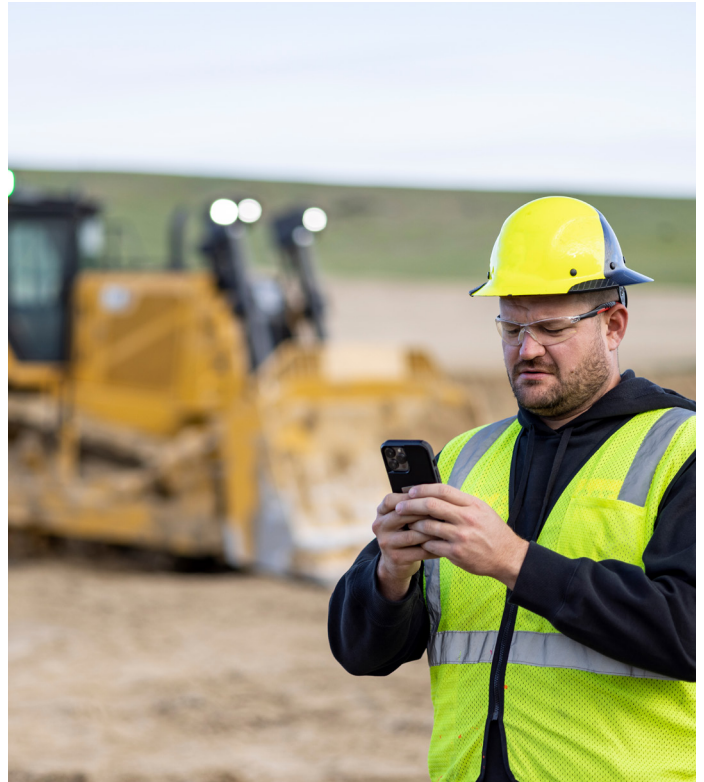
- Cat waste handlers are designed and built from the frame up to take on the challenges of landfill work.
- Specialized guarding, striker bars, and seals help protect machine and undercarriage from impact, wrapping, and airborne debris.
- Impact-resistant polycarbonate cab doors eliminate need for door screens.
- High-debris cooling system with automatic reversing fan and swing-out cleanout access.
- Lights mounted up and away from main debris area for protection, while still giving you plenty of light on the work area.
- Waste undercarriage, center-hole track shoes, and landfill blades help optimize performance.
- Laminated thermal shields and insulated clean emissions module.
- Pair with waste handling application profile for preset fan purge durations and Steer Assist blade steer enabled.



CONNECT TO GREATER EFFICIENCY

- VisionLink® provides actionable data insights for all assets—regardless of fleet size or equipment manufacturer.*
- Mixed-fleet management capable with API integration or by using Cat Product Link devices on equipment from other manufacturers, so you can monitor owned, rented, or leased assets.
- Review equipment data from your desktop or mobile device with customizable dashboards to provide information such as hours, miles, location with mapping, idle time, asset status, asset operation, and fuel utilization.
- Read/Write Remote Troubleshoot saves time and money by allowing your Cat dealer to perform diagnostic testing remotely.
- Remote Flash updates on-board software without a technician being present, at a time that is convenient for you, with the potential to reduce update time.

** Data field availability can vary by equipment manufacturer.*



REMOTE CONTROL READY



- Cab is remote control ready from the factory with external connector for dealer installation of a plug-and-play roof-mounted remote control unit.
- Cat Command for Dozing offers remote control operation. Remote control enables equipment operators to work safely outside the machine when working in hazardous environments.
- Command offers the choice of consoles (line-of-sight) or long-distance stations (non-line-of-sight).
- Maintain the use of technology features (Grade, Payload, Assist, etc.) using the touch screens on both the Command console* and station.

** Not all technology features are available on the Command console.*

- Optimize machine performance for greatest productivity, while helping improve fuel efficiency and reduce greenhouse gas emissions with a fully automatic 4-speed powershift, which continuously adjusts for maximum efficiency.
- The Cat C9.3B engine meets U.S. EPA Tier 4 Final, EU Stage V, Korea Stage V, and China Nonroad Stage IV emissions standards.
- Cat diesel engines are required to use ULSD (ultra-low sulfur diesel fuel with 15 ppm of sulfur or less) or ULSD blended with the following lower-carbon intensity fuels up to: 20% biodiesel FAME (fatty acid methyl ester)* or 100% renewable diesel, HVO (hydrogenated vegetable oil) and GTL (gas-to-liquid) fuels. Refer to guidelines for successful application. Please consult your Cat dealer or “Caterpillar Machine Fluids Recommendations” (SEBU6250) for details.
- Cat Grade with Slope Assist helps you avoid costly rework and wasteful fuel burn and greenhouse gas emissions by automating your blade position without a GPS signal.
- Cat Grade with 3D automates blade movements using a GPS signal, helping you follow a grade design and reducing fuel burn and greenhouse gas emissions by improving efficiency and accuracy.
- AutoCarry automates blade lift to reduce track slip for maximum efficiency on each pass to help lower fuel burn and greenhouse gas emissions.
- VisionLink displays the CO₂ emissions for monitored assets, calculated by fuel type for the runtime fuel burned each day in a selected date range.
- Remote Flash minimizes downtime and maintenance time while keeping your asset running with maximum efficiency. Alerts for machine updates are sent virtually from your Cat dealer and updates can be deployed without a dealer technician needing to be onsite.
- Read/Write Remote Troubleshoot decreases maintenance time and keeps your machine running with maximum efficiency by allowing your Cat dealer to virtually test the machine while working. Once a problem is identified, a technician can fix it the first time, saving time and money.

Productivity, fuel, and CO₂ emissions vary by application. CO₂ emissions calculations based on a reference work cycle using 2.2 U.S. gallons per hour of #2 U.S. diesel fuel. Applies IPCC2006 methodology using U.S. EPA Emissions Hub emission factors. Includes DEF related CO₂. Fuel measurements are at 15°C. Estimated average fuel consumption improvements are based on tests or Product Link data where available. Productivity improvements are based on test data.

**Engines with no aftertreatment devices can use higher blends, up to 100% biodiesel.*



MORE THAN MACHINES

BUILT AROUND YOUR SUCCESS

When you buy Cat equipment, you get so much more than the machine. You also get the support of a best-in-class dealer network, backed by a range of flexible solutions, technology, tools, and more.



CUSTOMER VALUE AGREEMENTS

A Customer Value Agreement (CVA) from your Cat dealer helps you do more and worry less. A CVA simplifies machine ownership and maintenance, adds the security of expert dealer support, and gives you the peace of mind from effective equipment health management.

REPAIR OPTIONS

A broad range of repair options gives you choices that work with your needs, budget, and timeline. Every repair is performed by expert Cat technicians. You'll receive smart repair advice, a timely, accurate quote, and service that gets your machine back into action quickly.

GENUINE CAT PARTS

Genuine Cat Parts deliver the highest level of reliability and productivity. Order direct from your Cat dealer or shop online at parts.cat.com.

FINANCIAL SERVICES

Count on Cat Financial to provide the best finance and extended protection solutions for your business. For more than 30 years, we have helped our customers succeed through financial service excellence.

GET BACK TO WORK

Services to help you save time, save money, and get back on the job.

CAT INSPECT

Access your equipment data on your mobile device. This easy-to-use app lets you capture inspection data and integrates with your other Cat data systems, so you can keep a close eye on your fleet.

HYDRAULICS AND HOSE

Whether you choose new, Reman, exchange, or rebuilt hydraulic components, you'll get expert diagnostics, testing, and contamination control. Cat Hose Service offers hoses and couplings for most makes and models.

CERTIFIED REBUILD

Get a full second machine life at a fraction of the cost of buying new. With upgraded features, safety enhancements, and the latest technologies, your old machine will perform even better than it did when it rolled off the line.

TECHNICAL SPECIFICATIONS

Engine

Engine Model	Cat® C15	
Power - Net	271 kW	363 hp
Net Power - ISO 9249/SAE J1349	271 kW	363 hp
Net Power - ISO 9249 (DIN)	368 mhp	368 mhp
Build Number	22A	
Emissions	U.S. EPA Tier 4 Final/ EU Stage V/Japan 2014/Korea Stage V/China Nonroad Stage IV	

Net power at 2,050 rpm. Net power advertised is the power available at the engine flywheel when the engine is equipped with a fan, air cleaner, clean emissions module and alternator. Advertised power is tested per the specified standard in effect at the time of manufacture.

Cat diesel engines are required to use ULSD (ultra-low sulfur diesel fuel with 15 ppm of sulfur or less) or ULSD blended with the following lower-carbon intensity fuels up to: 20% biodiesel FAME (fatty acid methyl ester)* or 100% renewable diesel, HVO (hydrotreated vegetable oil) and GTL (gas-to-liquid) fuels. Refer to guidelines for successful application. Please consult your Cat dealer or “Caterpillar Machine Fluids Recommendations” (SEBU6250) for details. *Engines with no aftertreatment devices can use higher blends, up to 100% biodiesel (for use of blends higher than 20% biodiesel, consult your Cat dealer).

Weights

Operating Weight	39 500 kg	87,083 lb
------------------	-----------	-----------

Transmission

Powertrain	Fully Automatic 4-Speed with Lock-up Clutch (LUC) torque divider	
------------	--	--

Service Refill Capacities

Fuel Tank	627 l	165.6 gal (US)
DEF Tank	33 l	8.7 gal (US)

Standard SU

Operating Weight	39 500 kg	87,083 lb
Ground Pressure	89.7 kPa	13 psi
Width of Standard Shoe	610 mm	24 in
Blade	Semi-Universal (SU)	
Blade Capacity	10.3 m ³	13.47 yd ³

LGP

Operating Weight	38 085 kg	83,963 lb
Ground Pressure	54.6 kPa	7.9 psi
Width of Standard Shoe	965 mm	38 in
Blade	LGP Semi-Universal (SU)	
Blade Capacity	9.9 m ³	12.9 yd ³

Waste Handler

Operating Weight	39 900 kg	87,964 lb
Ground Pressure	83.7 kPa	12.1 psi
Width of Standard Shoe	660 mm	26 in
Blade	Semi-Universal (SU) Landfill	
Blade Capacity	21.2 m ³	27.7 yd ³

LGP Waste Handler

Operating Weight	41 545 kg	91,591 lb
Ground Pressure	59.6 kPa	8.6 psi
Width of Standard Shoe	965 mm	38 in
Blade	Semi-Universal (SU) Landfill	
Blade Capacity	21.2 m ³	27.7 yd ³

Sustainability

Recyclability	98%
---------------	-----

Air Conditioning System

Air Conditioning	The air conditioning system on this machine contains the fluorinated greenhouse gas refrigerant R134a (Global Warming Potential = 1430). The system contains 1.36 kg of refrigerant which has a CO ₂ equivalent of 1.946 metric tonnes.
------------------	--

STANDARD & OPTIONAL EQUIPMENT

NOTE: Standard and optional equipment may vary. Consult your Cat® dealer for details.

	Standard	Optional
POWERTRAIN		
Cat C15 engine	✓	
Fully-automatic 4-speed transmission with lock-up clutch (LUC) torque divider	✓	
Aftercooler, air-to-air (ATAAC)	✓	
Extended life coolant	✓	
Diesel exhaust fluid (DEF) system - electronic fill indicator, heated lines/tank	✓	
Differential steering	✓	
Engine air filter with electronic service indicator	✓	
Engine air precleaner with dust ejection	✓	
Engine idle shutdown	✓	
Final drives, double reduction - Standard or LGP	✓	
Fuel water separator	✓	
Fuel priming pump, electric	✓	
Fan, hydraulic demand	✓	
Fan, auto reversing	✓	
Radiator, aluminum bar plate with debris resistant cores	✓	
High performance single plane cooling system	✓	
Starting aid, automatic ether	✓	
Brakes, extreme service		✓
Engine air precleaner with screen and dust ejector		✓
Engine with thermal shield		✓
Final drives, double reduction - Arctic, Waste		✓
Oil change system, high speed		✓
Sound suppression		✓
Starting aid, jacket water heater (110V or 220V)		✓
BLADES		
Semi-Universal (SU)		✓
Universal		✓
Waste/Landfill		✓
Angle		✓
Rock guard/wear plate		✓
Push plate		✓
FirstCut cutting edges (SU blades)		✓
HYDRAULICS		
Load sensing hydraulics	✓	
Independent steering and implement pumps	✓	
Dozer tilt hydraulics - single tilt	✓	
Guarded blade hydraulic hoses	✓	
Electronically enabled quick drop valve	✓	
Rear hydraulics ripper and winch ready	✓	
Dozer tilt hydraulics – dual tilt		✓

	Standard	Optional
BATTERIES, STARTERS, ALTERNATORS, AND COOLANT		
150 Amp alternator	✓	
24 Volt starter	✓	
Engine coolant, -37° C (-35° F)	✓	
Four maintenance free 12-volt batteries (900 cca) (24-volt system)	✓	
CAT TECHNOLOGY		
Cat Slope Indicate	✓	
Cat Assist with ARO package	✓	
Third party grade control ready cab	✓	
Compatibility with radios and base stations from Trimble, Topcon, and Leica	✓	
Capability to install 3D grade systems from Trimble, Topcon, and Leica	✓	
Product Link™ – cellular	✓	
Remote Flash/Troubleshoot	✓	
Cat Track Wear Sensor	✓	
Machine security - passcode	✓	
Remote control ready	✓	
Cat Grade 3D Ready with Assist package (hardware only)		✓
Cat Grade 3D with Assist package		✓
Product Link™ – dual mode		✓
Grade connectivity		✓
Grade corrections radio		✓
Machine security - Bluetooth		✓
Cat Command for Dozing		✓
BATTERIES, STARTERS, ALTERNATORS AND COOLANT		
150 Amp ducted alternator		✓
Arctic engine coolant, -51° C (-60° F)		✓
ATTACHMENTS		
Multi-shank ripper with CapSure ripper tips and shank protector		✓
Single shank ripper with CapSure ripper tip and shank protector		✓
Pin puller (single shank)		✓
Rear striker box with striker bar		✓
Rear striker bar		✓
Winch, PV140		✓
Rear counterweight		✓
Drawbar		✓
PUSH ARMS		
Standard	✓	
Extreme		✓

	Standard	Optional
OPERATOR ENVIRONMENT		
Fully redesigned cab with integrated ROPS and FOPS, single pane door glass, sliding windows, with Cat Advanced Cabin Filtration	✓	
Full-color 254 mm (10 in) liquid crystal touchscreen display	✓	
High definition rear view camera with backup lines	✓	
In-display key machine features	✓	
Operator ID/operator ID with security	✓	
Cloth seat with mechanical adjustable lumbar support	✓	
Armrests adjustable fore-aft and vertically	✓	
Electrohydraulic implement and steering controls	✓	
Joystick control - ARO	✓	
Decelerator pedal	✓	
Fresh air filter	✓	
Cab mounted modular HVAC system with automatic reversing fans. Automatic temperature and blower control with distributed ducting.	✓	
Rearview mirror	✓	
Retractable 76 mm (3 in) seat belt	✓	
Cup holders	✓	
Dash foot pads	✓	
Entertainment radio with Bluetooth and microphone	✓	
Lunch box storage	✓	
Wipers	✓	
USB and AUX ports	✓	
Operator presence switch	✓	
High debris cab, fully redesigned with integrated ROPS and FOPS, impact resistant polycarbonate doors, solid side windows for improved sealing, powered precleaner with Cat Advanced Cabin Filtration for improved performance and filter life		✓
Cab glass capable of withstanding up to 40 psi		✓
Deluxe leather heated/ventilated seat with electronic adjustable lumbar support		✓
Powered fresh air filter precleaner		✓
Communication radio ready		✓
Floor plate and pedals for shorter operators		✓
Emergency hammer		✓
Window shades		✓
SERVICE AND MAINTENANCE		
30-minute cab removal	✓	
Centralized, remote mounted pressure taps	✓	
Ecology drains	✓	
Extended service intervals (500 hours engine, 1,000-hour powertrain)	✓	
Ground level service center (remote electrical disconnect, secondary shutdown switch, hour meter, jump start)	✓	

	Standard	Optional
SERVICE AND MAINTENANCE		
Heavy duty perforated radiator doors, louvered and hinged	✓	
Under hood work light	✓	
Removable engine enclosures, perforated and hinged	✓	
S-O-S SM sampling ports	✓	
Shovel holder	✓	
Fast fuel fill		✓
High-speed oil change		✓
Heavy duty radiator doors for waste and woodchip applications		✓
Quick access cab floor		✓
GUARDING AND SCREENS		
Bottom guards - standard	✓	
Bottom guards - heavy duty, powered, sealed		✓
Cab rear screen - fixed or hinged		✓
Cab side screens - hinged		✓
Fuel tank guards		✓
HVAC guard		✓
Light guards		✓
Striker bars, front, suspended		✓
Sweeps package		✓
ELECTRICAL		
Lights - 6 LED	✓	
Access/egress lighting with shutdown timer	✓	
Backup alarm	✓	
Converter: 15 Amp, 12V outlets	✓	
Forward warning horn	✓	
Premium lights – 12 LED		✓
Beacon warning light		✓
UNDERCARRIAGE		
Standard or low ground pressure (LGP) undercarriage	✓	
Heavy duty with positive pin retention (PPR) undercarriage - 44 section track, sealed and lubricated, single grouser shoes	✓	
Suspension-type undercarriage	✓	
Carrier rollers	✓	
Hydraulic track adjusters	✓	
Lifetime lubricated track and roller	✓	
Moderate service track shoes	✓	
Track guide	✓	
Sprocket rim segments, replaceable	✓	
8-roller tubular track roller frame (carrier roller ready)	✓	
Two-piece master links	✓	
Heavy duty extended life (HDXL) with PPR undercarriage - 44 section track, sealed and lubricated, single grouser shoes		✓
Waste undercarriage		✓
Arctic undercarriage		✓
Extreme service track shoes		✓

For more complete information on Cat products, dealer services and industry solutions, visit us on the web at www.cat.com.

© 2024 Caterpillar. All Rights Reserved.

Materials and specifications are subject to change without notice. Featured machines in photos may include additional equipment. See your Cat dealer for available options.

CAT, CATERPILLAR, LET'S DO THE WORK, their respective logos, AutoCarry, DuraLink, S-O-S, Product Link, Cat Grade with Slope Assist, "Caterpillar Corporate Yellow," the "Power Edge" and Cat "Modern Hex" trade dress as well as corporate and product identity used herein, are trademarks of Caterpillar and may not be used without permission. VisionLink is a trademark of Caterpillar Inc., registered in the United States and in other countries.
www.cat.com www.caterpillar.com

AEXQ3920-00
Build Number: 22A
(Aus-NZ, Chile, China, Europe,
Japan, N Am, S Korea, Turkey)

